

Ozobot Calibration Tips:

It is important to calibrate Ozobot before each session and/or when you change play surfaces. Calibration helps improve Ozobot's code and line reading accuracy.

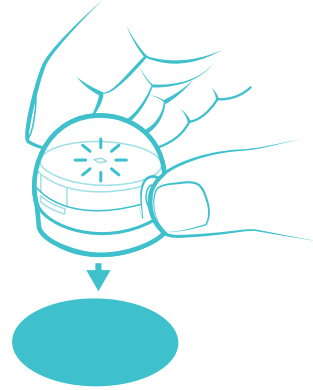
Tips: Paper Calibration

1



Hold down the power button on Ozobot for 2 seconds until the LED light flashes white.

2



Quickly Place Ozobot in the middle of the black calibration dot and let go.

3



Ozobot will move forward and blink green, which means it has successfully calibrated. Start over if Ozobot blinks red.



Use a black dot of this size to calibrate. If you are using markers, create a similar sized calibration dot using the black marker.

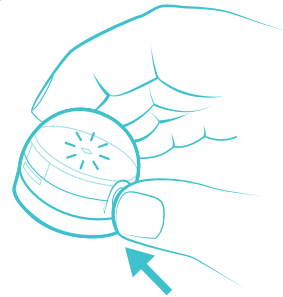
Tips: Digital Calibration

1



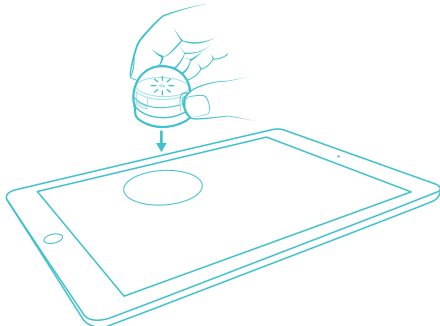
Set your screen brightness to 100% and make sure the auto-brightness feature is turned off.

2



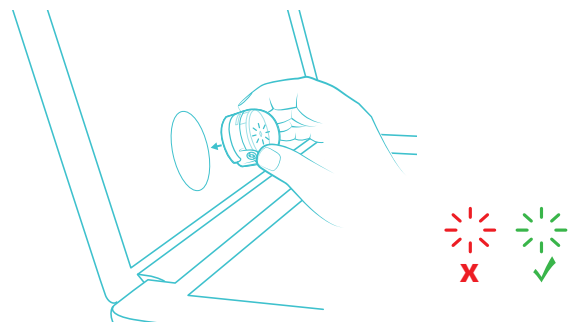
Hold down the power button on Ozobot for 2 seconds. The Ozobot will flash a white light when ready.

3



Release button and place Ozobot against the white spot, or to a WHITE section of the screen. Ozobot will begin flashing white.

4



When Ozobot blinks green, it means that it has successfully calibrated. Start over if Ozobot blinks red.